

# HY-WDS21E Tunnel Ultrasonic Anemometer

## Introduction

HY-WDS21E Ultrasonic Anemometer uses highly stable ultrasonic probes to simultaneously measure wind speed and direction based on principle of TOF(time of flight) of ultrasonic sound wave. It's specially designed for the tunnel application, it's installed on the tunnel wall and providing real-time tunnel wind data to total control room, as a basic basis for ventilation and operation.

## Application

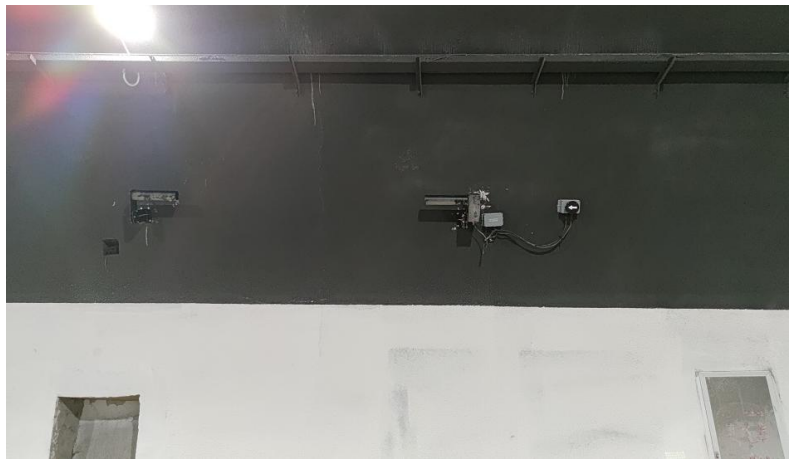
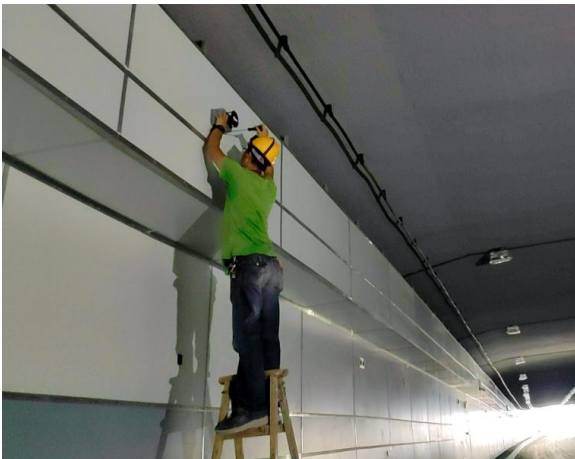
Tunnel airflow monitor  
Ports and harbour  
Emergency services  
Coastal and ocean buoys  
Environmental monitoring  
Photovoltaic plant



## Specification

Wind Speed: -30 ~ +30 m/s  
Resolution: 0.01 m/s Accuracy:  $\pm 2\%$   
Wind Direction: Positive or Negative  
Interface: RS232 or RS485  
Analog output: 4-20mA stand for 0~30m/s  
Relay output:  
Open stand for positive wind direction.  
Close stand for negative wind direction.  
Protocol: MODBUS-RTU  
Baud rate: 1200~115200 bps  
Power supply:  
100~240VAC 50/60Hz or 12~24VDC  
Operating Temperature: -40 ~ +70°C  
Operating Humidity: 0 ~ 100%  
Protection Class: IP65  
Dimensions: 120×140×200 mm<sup>3</sup>  
Weight: 0.6 kg  
Shipping Weight: 4 kg

## Site photos



Hongyuv Technology Co., Ltd.  
Xinye Road 4th, Pidu Zone, Chengdu City, Sichuan Province, China  
TEL / Whatsapp: +86 18681878709 Skype: stefan@hongyuv.com  
Email: stefan@hongyuv.com Wechat: wswgenius  
Website: www.hongyuv.com/en